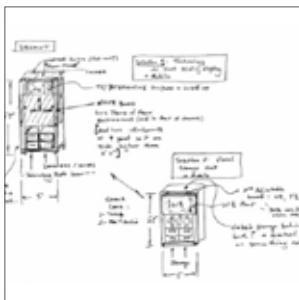


# ONE WORK PLACE

## Studio. Solutions

powered by VANERUM•STELTER



One Workplace Studio provides a  
process that helps customers develop  
needs. Our team brings the ability to  
based design in a way that **enhance**  
**technology** and **inspire**

an engaging, iterative design  
develop solutions to their unique  
to create products through user

**ances interaction, integrates** } i<sup>3</sup>  
**s lifelong learning.**



Cardboard prototype built to demonstrate

# Special configuration provides ample storage for engineering students

designed by the Studio design team

## Product Needs

- Special depth that worked with tables without wasting space.
- Custom configuration to fit the belongings of the typical users.
- Color match to existing products.

# ONE WORK PLACE *Studio.*



e real-life scale.





Architecture of the library.



3form power hub table has a unique shape that maximizes personal space for each user.

## Custom library integrates technology into every surface

### Product Needs

- Modern library with the need for tables that offer power to all visitors.
- Extra-large 3form surface built to designer's vision.
- ADA adjustable height table with built in lamp and power outlets.

# ONE WORK PLACE *Studio.*



Height adjustable table provides ADA workspace.





Scale model of the school



Sitting higher in Optimax creates ergonomically correct postures placing legs, hips and back at comfortable angles.

# Innovative school district

designed by the Studio design team

## Product Needs

- Optimax desking system customized with Soliwood Optimax chair supports optimal ergonomics and dynamic movement.
- Visa desks compliment Optimax, providing ADA desking in the classrooms. Soliwood chairs offer ergonomic support and flexibility that allows natural movement.
- Custom tech cart integrates technology and ergonomics. Height matches Optimax, keeping teachers and students connected on the same plane.
- Library carrels with technology support and ergonomic Soliwood chairs.

# ONE WORK PLACE *Studio.*

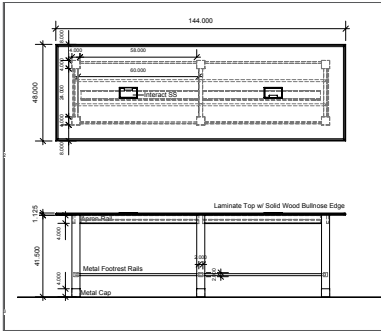


Integrate technology into science labs  
and support collaboration with partner  
institutions.



Custom carrels accommodate technology,  
allowing instructors to see students while  
maintaining student to student privacy.





Detailed drawings and renderings provide information for accurate manufacturing



The community table has a granite work-surface with magazine shelf integrated into the base.



A laminated top with a solid wood bullnose edge connects the table to the base.

# Hotel tables for guests on-the-go

designed by the Studio design team

## Product Needs

- Quick and easy access to technology while not obstructing visibility.
- Standing height allows guests to stay on-the-go.
- Community table offers ability for magazine storage and serving space
- Both tables integrate visually into the space with color-matched veneer bases with chrome accents.

# ONE WORK PLACE *Studio.*



ate worksurface with solid wood edges provide durability for daily use while two power outlets provide  
ivity. The base of the table has a stability building footrest.





Integrated locking storage compartment allows personal belongings to be secured



Cutaway mobile design allows unit to be wheeled over bed easily



Adjustable height to

# Medical over bed table brings stored personal items right to the bedside

designed by the Studio design team

## Product Needs

- Ability to store personal belongings without needing to walk across the room
- Locks provide security from thefts
- Adjustability allows table to comfortably adjust to proper ergonomic height
- Casters provide easy mobility over the bed
- Slide out tray keeps items such as paper and pencils easily accessible

# ONE WORK PLACE *Studio.*



Adjustable work surface lets patients adjust to optimal ergonomic position



Built-in tray provides quick access to commonly used items





Studio worked with the client's designer to execute their vision



Legs help to secure workspaces and allow installation in two sections around post



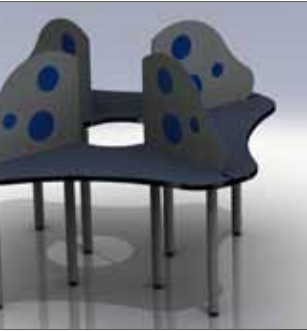
Rendering color an

## Unique table provides private space for computer use

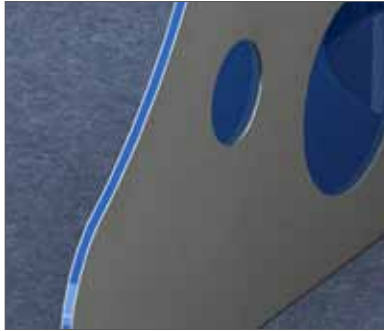
### Product Needs

- Specific curved radius edge on worksurface and dividers
- Ability to wrap around existing post for data capabilities
- Custom divider panels with custom cut acrylic and metal
- Specific color pallet matches existing environment

# ONE WORK PLACE *Studio.*

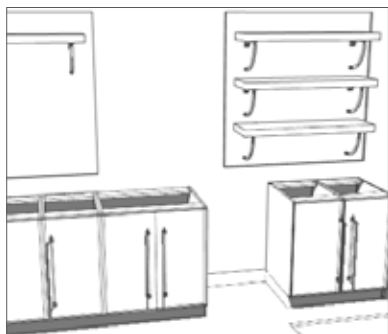


ings provide the ability to view  
d finish choices

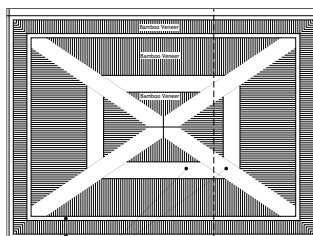


Custom cut acrylic is sandwiched between  
two laser cut pieces of metal providing a  
unique look





Parlor includes bamboo storage cabinets with wall-mountable glass shelf system



Solid cherry and bamboo inlay provide high end look and feel the bank wanted



# Sustainable products for bank teller, lounge and board room

designed by the Studio design team

## Product Needs

- Options such as SkyBlend Formaldehyde-Free particle board cores and Greenguard Certified laminate edges and surfaces helped contribute to LEED certification and is used throughout the space.
- Wall mount system with glass shelves and cabinets provide ample storage
- Warm accents of inlay bamboo and cherry veneer were applied to create a traditional look, representative of the banks brand and image
- Because most of the furniture would be built-in modular case work, they were also in need of installation assistance

# ONE WORK PLACE *Studio.*



Wall to wall board room storage unit includes glass shelves and inlaid touch-latch cabinet doors above and below worksurface





Solutions were developed to incorporate either horizontal or vertical movement of board for non-load bearing walls were considered.

# Column board solution offers retrofit option for technology integration into classrooms

designed by the Studio design team

## Product Needs

- ADA compliant
- Adjustable white board allows students of all heights to write comfortably
- Fixed mount monitor and adjustable white board provides optimal viewing from any area of the classroom
- Unit accepts up to a 65" monitor and is just 11" deep, maximizing available space for other activities and furniture
- Top anchor secures unit to ceiling while solid rubber bumper foot prevents marring

# ONE WORK PLACE *Studio.*



ards and monitors. Requirements for movement in and out of existing classrooms and





Worksurface rotates 360 degrees and locks at 5 positions



Latch and hinge system provides easy access to change drawing or map



A Plexiglass work surface allows users to easily write and re-write on the drawing surface

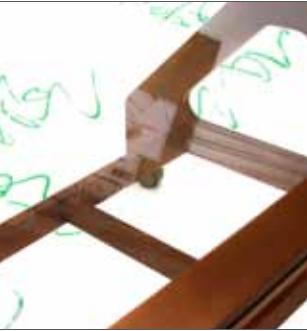
# 360° rotating map table gives gasoline company means to plan configurations

designed by the Studio design team

## Product Needs

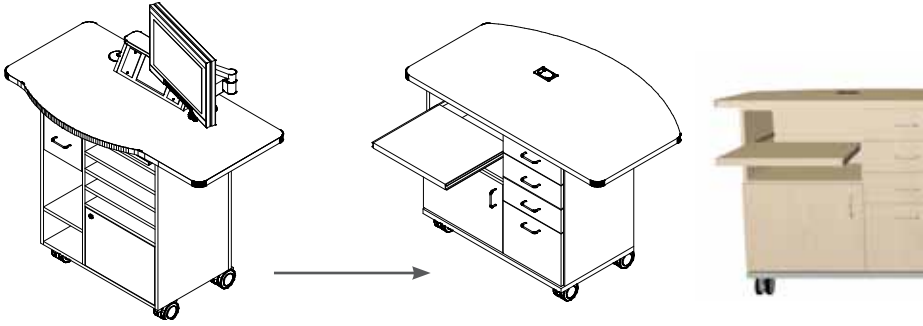
- Mobility
- Built in foot rest
- Plexiglass enables users to easily write and re-write on worksurface
- Worksurface rotates 360 degrees and locks into 5 positions to accommodate multiple maps
- Locking latch and hinge system provides easy access to maps or drawings

# ONE WORK PLACE *Studio.*



glass work surface allows users to  
write and rewrite without damaging  
writing beneath





Based upon a Studio tech cart the client liked, the Studio team utilized a collaborative process working directly with the client to deliver exactly what they wanted

# Classroom tech cart provides storage for equipment and surfaces for meeting and working

designed by the Studio design team

## Product Needs

- Ample storage including file drawer and slide out keyboard tray
- Easy mobility
- Oversized worksurface to foster student <> teacher relationships
- Wire management includes grommets and cord storage

# ONE WORK PLACE *Studio.*



ative

Ample storage, slide out keyboard tray, mobility, power management, and a oversized workspace to foster student <> teacher relationships are some key components to this tech cart



ONE WORK PLACE *Studio.*  
powered by **VANERUM•STELTER**

One Workplace | 1057 Montague Expressway, Milpitas, CA 95035 | 866.632.7010